

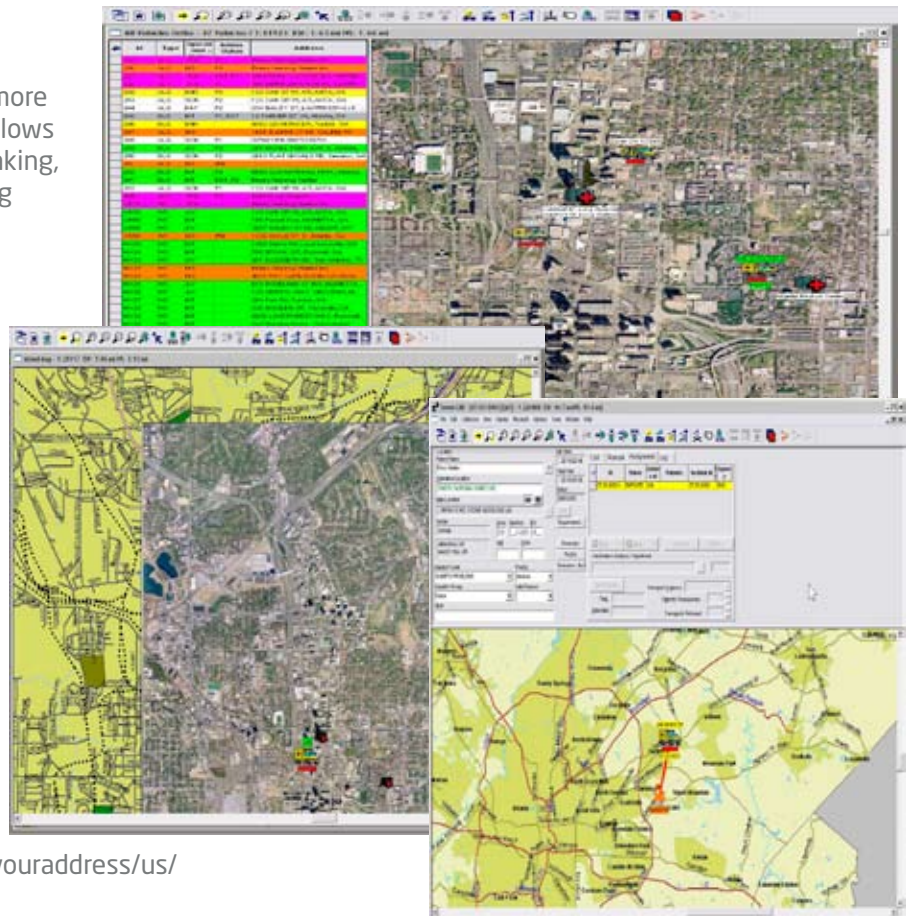
# Perfect your Precision With Integrated Mapping in Sweet-CAD

Increase your dispatch accuracy by adding precision visuals (maps) to Sweet-CAD

Sweet-CAD is a map-centric software application, thus, many of the functions are built around the presence of map data in the system. Sweet-CAD uses a standard map data format known as shapefile format, which can be obtained from a variety of sources, such as local GIS offices or a commercial data sources.

Here's what it means for you:

- **Integrate Third-Party Map Data, Ortho Maps and Landmark Data** - more precise and up-to-date information allows for better evaluation and decision making, resulting in more accurate dispatching
- **Work with your local GIS Department** - local GIS offices may be able to provide current map data; Ortivus specification documents are available upon request
- **Flexibility in map layers** - enables customers to set up maps according to their individual needs and preferences
- **Premiere commercial data source - TeleAtlas** - source for premium map data, updated quarterly and available on a per county/per year license basis; to search the accuracy of their data, visit [www.geographic.com/teleatlas/mapyouraddress/us/](http://www.geographic.com/teleatlas/mapyouraddress/us/)



For more information on Integrated Mapping for Sweet-CAD, call Ortivus at 800-537-3927 or email [sales@ortivusna.com](mailto:sales@ortivusna.com). TeleAtlas quotes can be obtained through your Sweet-CAD sales representative.