

Sweet-AVL

Information Management Made Simple

Sweet-AVL application enables EMS Services to track their vehicles in real time! Sweet-AVL accepts GPS data transmitted by devices in the vehicles, and uses that data to plot the location of the vehicles on one or more map displays.

Benefits

- Answers common dispatcher questions, such as "Where are my vehicles?" and "What are they doing?"
- Reliability rating of last position report supports better decision making
- Simultaneous display of maps showing different geographies and selections of vehicles for a 'bigger picture' view
- Address and respective coordinates (e.g. latitude/longitude) displayed in mouse cursor as hover over map areas for quick and easy location information

Product Highlights

- Real-time tracking of vehicle location, direction of travel and speed - all displayed on an electronic map
- Optimized for rapid panning and zooming
- High degree of customizable features, such as display rules for each map-layer (e.g. streets, highways, rivers, shore lines, railroads, power lines, etc.), label names and foreground/background colors, vehicle icons, vehicle attributes, different views (e.g. map vs. list)
- Playback capability to recreate fleet movements
- Ability to request display vehicles nearest to a given point
- Ability to request premise information that falls within range of a given point (e.g. allows operator to locate hazardous materials, floor plans, evacuation plans, etc. within proximity of a given location)
- Sweet-AVL can integrate existing map data or be supplied with new data
- Easily upgrades to Sweet-CAD for computerized dispatch functionality

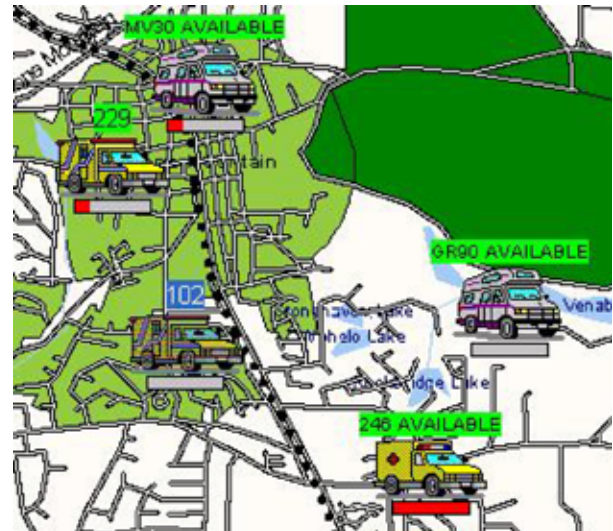


Figure 1: Customized icons make tracking units at a glance easy

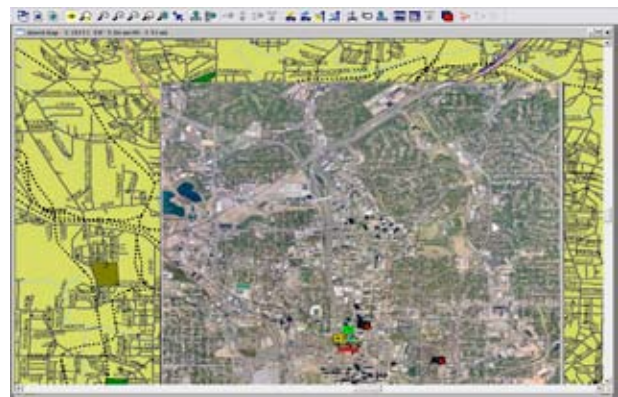


Figure 2: Harness the power of map layers with Sweet-CAD

Sweet-AVL tracks and traces vehicle locations and displays them on an electronic map to provide key information for dispatchers to make better decisions.

*Dispatchers know where their vehicles are and what they are doing. Better decisions result in **FASTER RESPONSE TIMES** and **MORE EFFICIENT FLEET OPERATION.***